

Sizing Sheet

Patient initials _____

Date of birth _____

Gender f m

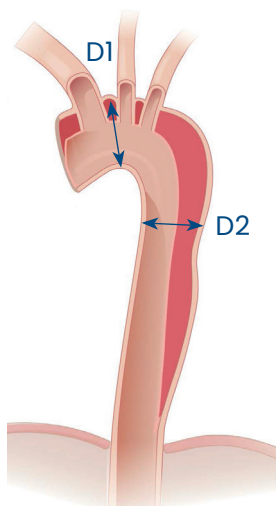
Implantation date _____

Date of Assessment _____

Evaluated by _____

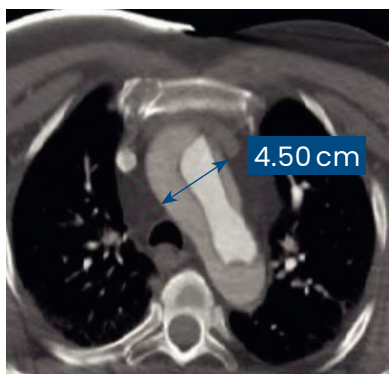
Hospital/City/Country _____

Date CT/MRI/Slice thick. _____



D1 Example

At the level between the innominate and left common carotid artery



D2 Example

At the level of the bifurcation of the pulmonary artery



Using pre-op CT scan, measure the aortic vessel diameter (adventitia to adventitia):

| D1 Maximum aortic diameter between the Brachiocephalic Trunk (Innominate) and the Left Common Carotid Artery | D2 Maximum aortic diameter at the level of bifurcation of the pulmonary artery | AMDS reference |
|---|--|--------------------------|
| 20 - 35 mm | 20 - 24 mm | AMDS - 40 - 30 mm |
| 20 - 35 mm | 25 - 35 mm | AMDS - 40 - 40 mm |
| 36 - 45 mm | 27 - 35 mm | AMDS - 55 - 40 mm |
| 36 - 45 mm | 36 - 45 mm | AMDS - 55 - 55 mm |

Comments

ARTIVION™

Learn more at artivion.com

*Ascyrus Medical Dissection Stent Hybrid Prosthesis

Products/indications are not available in all markets. Refer to the Instructions for Use and other product insert documentation that accompanies each of these devices for indications, contraindications, warnings, precautions, possible complications, and instructions for use.

All trademarks are owned by Artivion, Inc. or its subsidiaries. On-X Life Technologies, Inc. Jotec GmbH and Ascyrus Medical GmbH are wholly owned subsidiaries of Artivion, Inc. © 2022 Artivion, Inc. All rights reserved.

Artivion, Inc., 1655 Roberts Blvd., NW, Kennesaw, GA 30144 USA
Phone: +1-888-427-9654 | Fax: +770-590-3753 | E-mail: inquiries@artivion.com
For contact information by region, please visit: www.artivion.com/contact

 Ascyrus Medical GmbH, Bethmannstrasse 8, 60311 Frankfurt, Germany

JT-SI-0980200-EN V03 11/2022