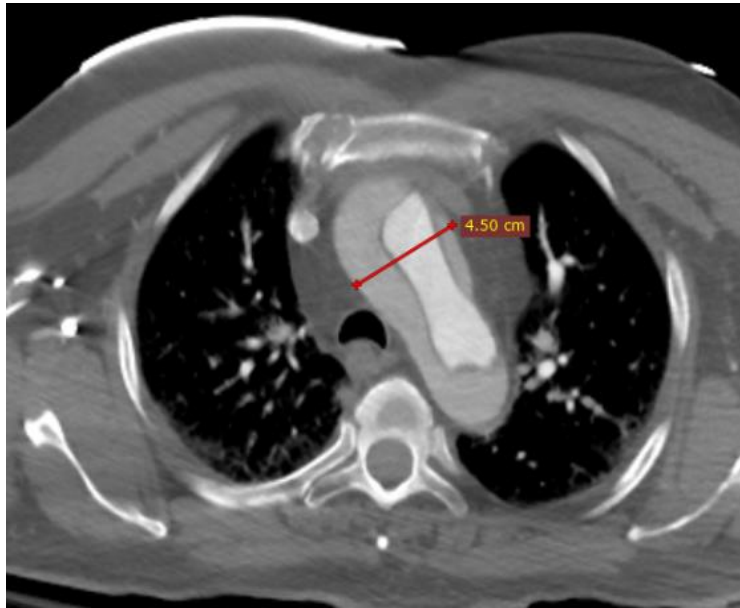


AMDS Sizing Overview

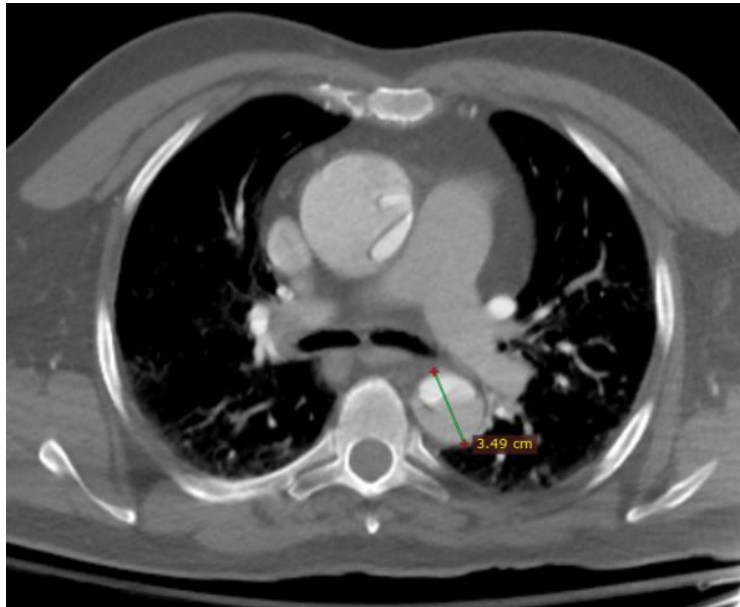
<i>Device</i>	<i>Item Number</i>	<i>PTFE Felt Tube (cuff) Inner Diameter</i>	<i>Stent Diameter</i>	<i>(i) Proximal Aorta Diameter (mm)</i>	<i>(ii) Distal Aorta Diameter (mm)</i>	<i>Device Coverage (mm)</i>
<i>AMDS 40-30 tapered</i>	22630	24	40 proximal 30 distal	20-35	20-24	170-210
<i>AMDS 40</i>	22631	24	40	20-35	25-35	155-208
<i>AMDS 55-40 tapered</i>	22628	32	55 proximal 40 distal	36-45	27-35	190-225
<i>AMDS 55</i>	22629	32	55	36-45	36-45	195-231



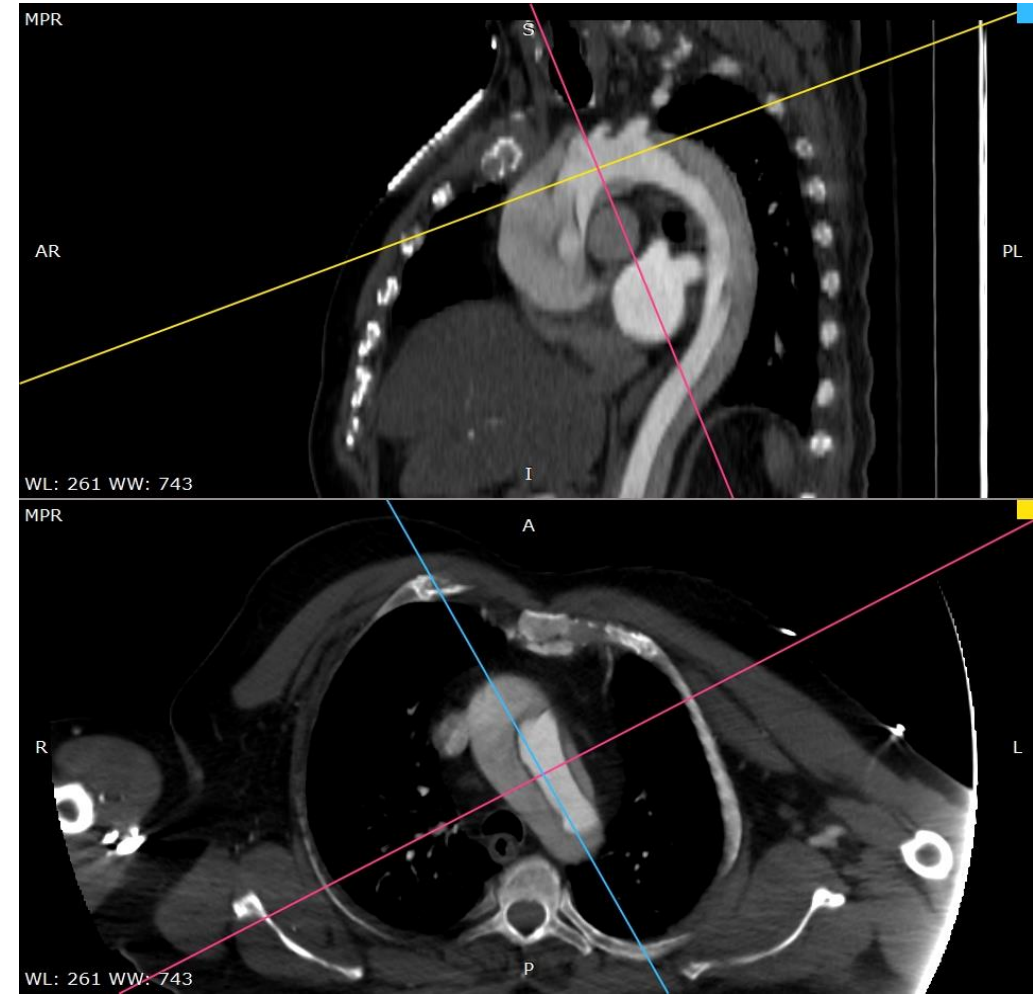
The aorta is measured proximally at the level between the innominate and the left common carotid artery (i) and distally at the level of the tracheal bifurcation (ii)



Above: (i) Proximal aorta measurement



Above: (ii) Distal aorta measurement



Above: 3D MPR image on proximal sizing with centerline alignment